

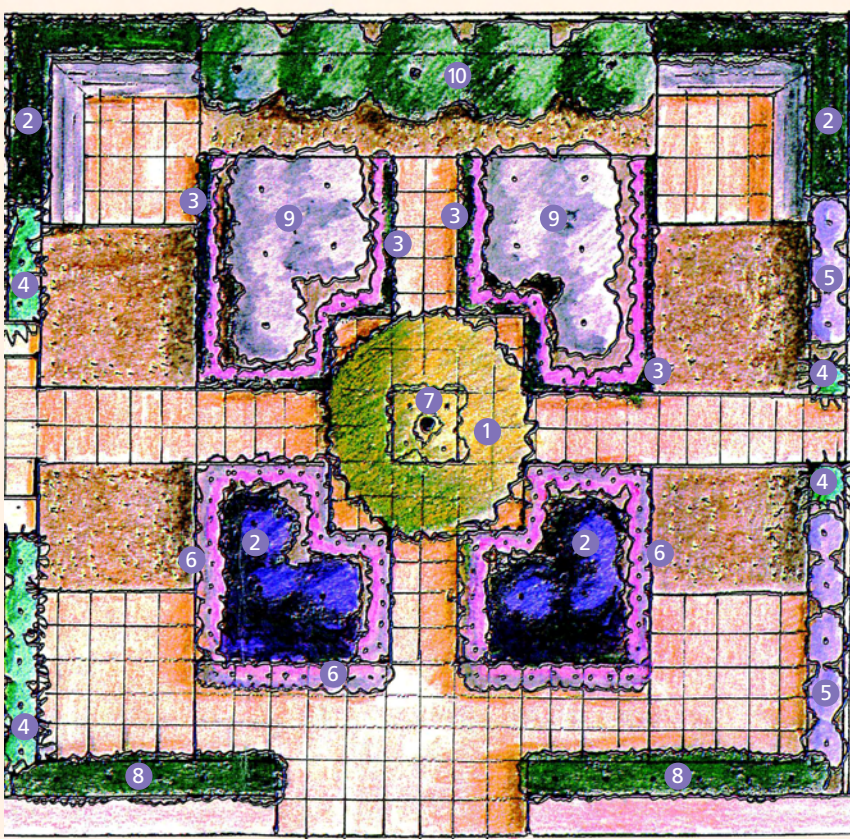


AUSTRALIAN ARID LANDS  
BOTANIC GARDEN

# ARID COURTYARD

Save water, save money, save the planet.  
That's AridSmart!

**AridSmart**  
THE FUTURE OF GARDENING



## Plant Species

- 1 *Acacia pycnantha*
- 2 *Alyogyne huegelii*
- 3 *Boronia crenulata*
- 4 *Dianella revoluta*
- 5 *Eremophila lachnocalyx*
- 6 *Frankenia serpyllifolia*
- 7 *Goodenia varia*
- 8 *Myoporum brevipes*
- 9 *Olearia pimeleoides*
- 10 *Calothamnus quadrifidus*

## Water Use

AridSmart Arid Courtyard Garden  
14,080 litres per year (once established)



Average Home Garden (with lawn)  
100,000 litres per year



## How to create this garden at home

- › Use plants with bright green, small, glossy leaves to create a hedge around the garden. This will enclose the space and give a sense of privacy or seclusion, just like a room.
- › Use plants in the central beds that look great when in flower, but more importantly make sure they have interesting foliage that will look good when not in flower. The border plants in these beds should also contrast with the larger plants.
- › Choose a specimen tree for the centre of the garden and don't just rely on flowers as the main focus. We have selected *Acacia pycnantha* because it has beautiful smooth white bark, a nice dense bushy crown and the bonus of glorious flowers. It is Australia's floral emblem.
- › Use gravel and large pavers to combine as seating areas and spaces for garden art.